

Piedmont

Piedmont
3.0" Style K

PIEDMONT - SINCE 2002

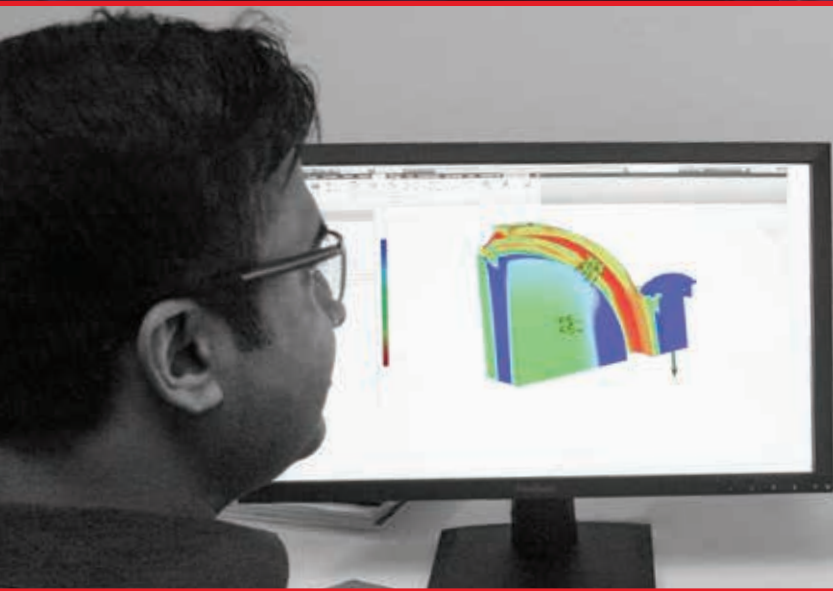
**FLEXIBLE PIPE
COUPLINGS
GUIDE**



ESTABLISHED IN 2002, PIEDMONT WAS THE FIRST TO INTRODUCE DUPLEX AND SUPER DUPLEX FLEXIBLE COUPLINGS TO THE DESALINATION INDUSTRY.

ENGINEERING

Piedmont distinguishes itself by its outstanding engineering capabilities. Our team not only includes product experts but also desalination systems professionals with pipe work design experience. This expertise is at your disposition whenever your projects need it.



QUALITY CONTROL

Following AWWA and ASTM design standards, all Piedmont metallic couplings are inspected to guarantee the highest alloy composition quality is met for strength and corrosion resistance. Visual and dimensional checks are performed in addition to ferritic inspection for Duplex and Super Duplex material.





S

STYLE S / SS

1500 PSI | Duplex - Super Duplex
0.75" to 4.0"

4



D

STYLE D / DS

1200 PSI | Duplex - Super Duplex
0.75" to 16.0"

4



F

STYLE F / FS

400 - 600 PSI | Duplex - Super Duplex
0.75" to 16.0"

5



B

STYLE B

600 PSI | 316 Stainless steel
0.75" to 16.0"

6



K

STYLE K

300 - 450 PSI | 316 Stainless steel
0.75" to 16.0"

6



J

STYLE J

100 PSI | 316 Stainless steel
76.1 mm

7



P

STYLE P

100 - 250 PSI | Composite Plastic
0.75" to 8.0"

8

COMPLEMENTARY PRODUCTS

9

DUPLEX SUPER DUPLEX

APPLICATIONS

Ideal for concentrate & feed side of SWRO systems.

Housings

Duplex or Super Duplex stainless steel type CE8MN (2205 - UNS # J93345) conform to ASTM A995, Grade 2A requirements. Also offered in Super Duplex type CE3MN (2507 - UNS # J93345) conform to ASTM A995, Grade 5A requirements for higher resistance to corrosion. Other alloys also available; contact Piedmont for details.

Gaskets

EPDM rubber, suitable for hot and cold water services. Two shapes of gaskets available: C-shaped or Flush-fit. NSF/ANSI 61 approved for drinking water system components. *Not suitable for petroleum services.*

Bolts

Round-head square-neck 316 stainless steel bolts conform to ASME B18.5.

Nuts / Washers

316 stainless steel heavy hex nuts. Style D 0.75" to 3.0" supplied with silicon bronze nuts (type 651).
316 stainless steel heavy pattern (only with Style S/SS and D/DS).

STYLE S SPECIFICATIONS					
Nominal Sizes	Dimensions			Approx. Weight	Working pressure
	X	Y	Z		
Inches	inches (mm)	inches (mm)	inches (mm)	lbs. (kg)	PSI (bar)
0.75	2.00 (50.8)	3.20 (81.3)	1.71 (43.4)	1.10 (0.50)	1500 (103)
1.0	2.40 (60.9)	3.50 (88.8)	1.68 (42.7)	1.16 (0.53)	1500 (103)
1.5	3.04 (77)	4.17 (105.9)	1.71 (43.4)	1.60 (0.72)	1500 (103)
2.0	3.50 (88.9)	4.81 (122.1)	1.79 (45.5)	2.53 (1.15)	1500 (103)
2.5	3.92 (99.3)	5.38 (136.5)	1.85 (47.0)	3.15 (1.43)	1500 (103)
3.0	4.70 (119.4)	6.23 (158)	1.85 (47.0)	3.80 (1.72)	1500 (103)
4.0	5.90 (149.7)	7.40 (187.9)	2.02 (51.3)	5.86 (2.66)	1500 (103)

STYLE D SPECIFICATIONS					
Nominal Sizes	Dimensions			Approx. Weight	Working pressure
	X	Y	Z		
Inches	inches (mm)	inches (mm)	inches (mm)	lbs. (kg)	PSI (bar)
0.75	1.91 (48.5)	3.04 (77.2)	1.68 (42.7)	0.81 (0.37)	1200 (82)
1.0	2.29 (58.2)	3.42 (86.9)	1.68 (42.7)	0.97 (0.44)	1200 (82)
1.25	2.50 (63.5)	3.65 (92.7)	1.71 (43.4)	1.08 (0.49)	1200 (82)
1.50	2.76 (70.1)	4.06 (103.1)	1.71 (43.4)	1.21 (0.55)	1200 (82)
2.0	3.24 (82.3)	4.38 (111.3)	1.85 (47.0)	1.92 (0.87)	1200 (82)
2.5	3.74 (95.0)	5.30 (134.6)	1.85 (47.0)	2.14 (0.97)	1200 (82)
3.0	4.48 (113.8)	6.02 (153.1)	1.85 (47.0)	2.64 (1.20)	1200 (82)
4.0	5.70 (144.8)	7.60 (193.0)	2.02 (51.3)	4.54 (2.06)	1200 (82)
5.0	7.22 (183.4)	9.50 (241.5)	2.02 (51.3)	9.30 (4.23)	1200 (82)
6.0	8.18 (207.8)	10.25 (260.4)	2.02 (51.3)	9.74 (4.42)	1200 (82)
8.0	10.89 (276.6)	13.44 (341.5)	2.34 (60.7)	24.50 (11.10)	1000 (69)
10.0	13.28 (337.3)	15.88 (403.3)	2.55 (64.8)	33.46 (15.18)	1000 (69)
12.0	15.28 (388.1)	17.38 (441.4)	2.55 (64.8)	33.82 (15.80)	1000 (69)

Style D coupling also available in nominal sizes 14.0" and 16.0". Contact Piedmont for details.



4 **STYLE S / SS**

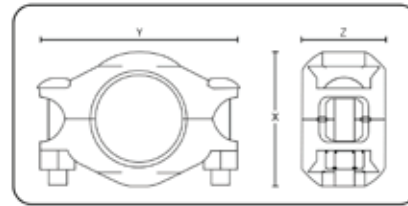


STYLE D / DS

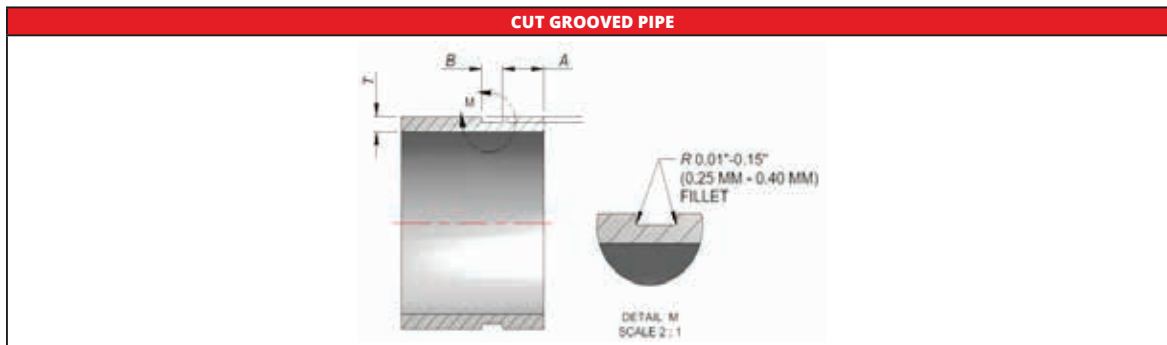


STYLE F / FS

STYLE F SPECIFICATIONS					
Nominal Sizes	Dimensions			Approx. Weight	Working pressure
	X	Y	Z		
Inches	inches (mm)	inches (mm)	inches (mm)	lbs. (kg)	PSI (bar)
0.75	1.82 (46.2)	2.90 (73.7)	1.68 (42.7)	0.63 (0.28)	600 (41)
1.0	2.18 (55.4)	3.50 (89.0)	1.70 (43.2)	0.72 (0.33)	600 (41)
1.25	2.42 (61.5)	3.60 (91.4)	1.70 (43.2)	0.77 (0.35)	600 (41)
1.5	2.66 (67.6)	3.79 (96.3)	1.70 (43.2)	0.79 (0.36)	600 (41)
2.0	3.14 (79.8)	4.13 (104.9)	1.70 (43.2)	0.85 (0.39)	600 (41)
2.5	3.69 (93.7)	5.00 (127.0)	1.70 (43.2)	1.40 (0.64)	600 (41)
3.0	4.36 (110.7)	5.70 (144.8)	1.85 (47.0)	1.83 (0.83)	600 (41)
4.0	5.70 (144.8)	7.50 (190.5)	1.85 (47.0)	3.25 (1.47)	600 (41)
6.0	7.80 (198.1)	9.75 (247.7)	1.90 (48.3)	5.11 (2.32)	400 (28)



Style F coupling also available in nominal sizes from 8.0" to 16.0". Contact Piedmont for details.



CUT GROOVED PIPE SPECIFICATION FOR FLEXIBLE COUPLINGS								
Nominal pipe size	OD and tolerance			A (+0.015, -0.030)	B (+0.031, -0.015)	C		Min. T
	Dia.	Tol. (+)	Tol. (-)			Dia.	Tol. (0.0)	
Inches	inches (mm)	inches (mm)	inches (mm)	inches (mm)	inches (mm)	inches (mm)	inches (mm)	inches (mm)
0.75	1.050 (26.70)	0.010 (0.25)	0.010 (0.25)	0.625 (15.88)	0.313 (7.95)	0.938 (23.83)	-0.015 (-0.38)	0.113 (2.87)
1.0	1.315 (33.40)	0.013 (0.33)	0.013 (0.33)	0.625 (15.88)	0.313 (7.95)	1.190 (30.23)	-0.015 (-0.38)	0.133 (3.38)
1.25	1.660 (42.20)	0.016 (0.41)	0.016 (0.41)	0.625 (15.88)	0.313 (7.95)	1.535 (38.99)	-0.015 (-0.38)	0.140 (3.56)
1.5	1.900 (48.30)	0.019 (0.48)	0.019 (0.48)	0.625 (15.88)	0.313 (7.95)	1.775 (45.09)	-0.015 (-0.38)	0.145 (3.68)
2.0	2.375 (60.30)	0.024 (0.61)	0.024 (0.61)	0.625 (15.88)	0.313 (7.95)	2.250 (57.15)	-0.015 (-0.38)	0.154 (3.91)
2.5	2.875 (73.00)	0.029 (0.74)	0.029 (0.74)	0.625 (15.88)	0.313 (7.95)	2.720 (69.09)	-0.018 (-0.46)	0.188 (4.78)
3.0	3.500 (88.90)	0.035 (0.89)	0.031 (0.79)	0.625 (15.88)	0.313 (7.95)	3.344 (84.94)	-0.018 (-0.46)	0.188 (4.78)
4.0	4.500 (114.30)	0.045 (1.14)	0.031 (0.79)	0.625 (15.88)	0.375 (9.53)	4.334 (110.08)	-0.020 (-0.51)	0.203 (5.16)
6.0	6.625 (168.30)	0.062 (1.60)	0.031 (0.79)	0.625 (15.88)	0.375 (9.53)	6.455 (163.96)	-0.022 (-0.56)	0.219 (5.56)
8.0	8.625 (219.10)	0.062 (1.60)	0.031 (0.79)	0.750 (19.05)	0.438 (11.13)	8.441 (214.40)	-0.022 (-0.64)	0.238 (6.05)
10.0	10.750 (273.00)	0.062 (1.60)	0.031 (0.79)	0.750 (19.05)	0.500 (12.70)	10.562 (268.28)	-0.027 (-0.69)	0.250 (6.35)
12.0	12.750 (323.90)	0.062 (1.60)	0.031 (0.79)	0.750 (19.05)	0.500 (12.70)	12.531 (318.29)	-0.030 (-0.76)	0.279 (7.09)
14.0	14.00 (355.60)	0.062 (1.60)	0.031 (0.79)	0.938 (23.83)	0.500 (12.70)	13.781 (350.03)	-0.030 (-0.76)	0.281 (7.13)
16.0	16.00 (406.40)	0.062 (1.60)	0.031 (0.79)	0.938 (23.83)	0.500 (12.70)	15.781 (400.84)	-0.030 (-0.76)	0.312 (7.93)

316 STAINLESS STEEL

APPLICATIONS

Ideal for concentrate & feed side of BWRO systems.

Housings

316 stainless steel, Grade CF8M (UNS # J92900) conform to ASTM A351/A351M.

Gaskets

EPDM rubber, suitable for hot and cold water services. Two shapes of gaskets available: C-shaped or Flush-fit. NSF/ANSI 61 approved for drinking water system components. *Not suitable for petroleum services.*

Bolts

Round-head square-neck 316 stainless steel bolts conform to ASME B18.5.

Nuts

316 stainless steel heavy hex nuts.

STYLE B SPECIFICATIONS					
Nominal Sizes	Dimensions			Approx. Weight	Working pressure
	X	Y	Z		
Inches	inches (mm)	inches (mm)	inches (mm)	lbs. (kg)	PSI (bar)
0.75	1.91 (48.5)	3.04 (77.2)	1.68 (42.7)	0.81 (0.37)	600 (40)
1.0	2.29 (58.2)	3.42 (86.8)	1.68 (42.7)	0.95 (0.43)	600 (40)
1.25	2.50 (63.5)	3.65 (92.7)	1.71 (43.4)	1.09 (0.49)	600 (40)
1.5	2.76 (70.1)	4.06 (103.1)	1.71 (43.4)	1.18 (0.54)	600 (40)
2.0	3.24 (82.3)	4.38 (111.3)	1.85 (47.0)	1.38 (0.63)	600 (40)
2.5	3.74 (95.0)	5.30 (134.6)	1.85 (47.0)	2.05 (0.93)	600 (40)
3.0	4.36 (110.7)	5.88 (149.3)	1.85 (47.0)	2.40 (1.09)	600 (40)
4.0	5.70 (144.8)	7.60 (193.0)	2.02 (51.3)	4.23 (1.92)	600 (40)
6.0	8.18 (207.8)	10.25 (260.4)	2.02 (51.3)	9.12 (4.14)	600 (40)

Style B coupling also available in nominal sizes from 8.0" to 14.0". Contact Piedmont for details.

STYLE K SPECIFICATIONS					
Nominal Sizes	Dimensions			Approx. Weight	Working pressure
	X	Y	Z		
Inches	inches (mm)	inches (mm)	inches (mm)	lbs. (kg)	PSI (bar)
0.75	1.82 (46.2)	2.90 (73.7)	1.68 (42.7)	0.63 (0.28)	450 (31)
1.0	2.18 (55.4)	3.50 (89.0)	1.70 (43.2)	0.72 (0.33)	450 (31)
1.25	2.42 (61.5)	3.60 (91.4)	1.70 (43.2)	0.77 (0.35)	450 (31)
1.5	2.66 (67.6)	3.79 (96.3)	1.70 (43.2)	0.79 (0.36)	450 (31)
2.0	3.14 (79.8)	4.13 (104.9)	1.70 (43.2)	0.85 (0.39)	450 (31)
2.5	3.69 (93.7)	5.00 (127.0)	1.70 (43.2)	1.40 (0.64)	450 (31)
3.0	4.36 (110.7)	5.70 (144.8)	1.85 (47.0)	1.83 (0.83)	450 (31)
4.0	5.70 (144.8)	7.50 (190.5)	2.02 (51.3)	3.25 (1.47)	450 (31)
6.0	7.80 (198.1)	9.75 (247.7)	1.90 (48.3)	5.11 (2.32)	300 (20)
8.0	9.94 (252.5)	12.13 (308.1)	2.25 (57.2)	8.71 (3.95)	300 (20)
10.0	12.12 (307.8)	14.26 (362.2)	2.25 (57.2)	11.07 (5.02)	300 (20)
12.0	14.18 (360.2)	16.26 (413.0)	2.25 (57.2)	12.64 (5.73)	300 (20)

Style K coupling also available in nominal sizes 14.0" and 16.0". Contact Piedmont for details.



STYLE B

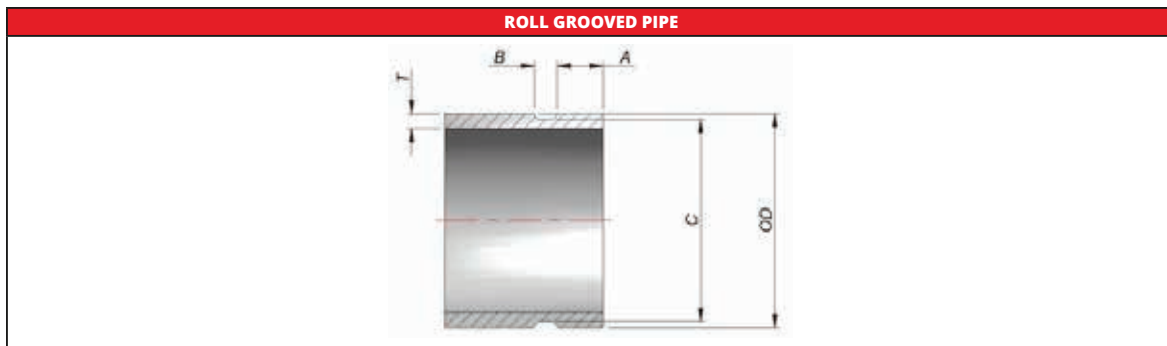
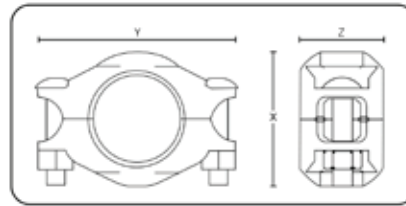


STYLE K



STYLE J

STYLE J SPECIFICATIONS					
Nominal Sizes	Dimensions			Approx. Weight	Working pressure
	X	Y	Z		
(mm)	inches (mm)	inches (mm)	inches (mm)	lbs. (gr)	PSI (bar)
76.1	5.25 (133.3)	3.67 (93.1)	1.69 (43.0)	1.25 (567)	250 (40)



ROLL GROOVED PIPE SPECIFICATION FOR FLEXIBLE COUPLINGS

Nominal pipe size	OD and tolerance			A (+0.015, -0.030)	B (+0.031, -0.015)	C		Min. T
	Dia.	Tol. (+)	Tol. (-)			Dia.	Tol. (0.0)	
Inches	inches (mm)	inches (mm)	inches (mm)	inches (mm)	inches (mm)	inches (mm)	inches (mm)	inches (mm)
0.75	1.050 (26.67)	0.010 (0.25)	0.010 (0.25)	0.625 (15.88)	0.281 (7.14)	0.938 (23.83)	-0.015 (-0.38)	0.065 (1.65)
1.0	1.315 (33.40)	0.013 (0.33)	0.013 (0.33)	0.625 (15.88)	0.281 (7.14)	1.190 (30.23)	-0.015 (-0.38)	0.065 (1.65)
1.25	1.660 (42.16)	0.016 (0.41)	0.016 (0.41)	0.625 (15.88)	0.281 (7.14)	1.535 (38.99)	-0.015 (-0.38)	0.065 (1.65)
1.5	1.900 (48.26)	0.016 (0.41)	0.016 (0.41)	0.625 (15.88)	0.281 (7.14)	1.775 (45.09)	-0.015 (-0.38)	0.065 (1.65)
2.0	2.375 (60.33)	0.024 (0.61)	0.016 (0.41)	0.625 (15.88)	0.344 (8.74)	2.250 (57.15)	-0.015 (-0.38)	0.065 (1.65)
2.5	2.875 (73.03)	0.029 (0.74)	0.016 (0.41)	0.625 (15.88)	0.344 (8.74)	2.720 (69.09)	-0.015 (-0.38)	0.083 (2.11)
3.0	3.500 (88.90)	0.030 (0.76)	0.018 (0.46)	0.625 (15.88)	0.344 (8.74)	3.344 (84.94)	-0.015 (-0.38)	0.083 (2.11)
4.0	4.500 (114.30)	0.035 (0.89)	0.020 (0.51)	0.625 (15.88)	0.344 (8.74)	4.334 (110.34)	-0.015 (-0.38)	0.083 (2.11)
5.0	5.563 (141.30)	0.056 (1.42)	0.022 (0.56)	0.625 (15.88)	0.344 (8.74)	5.395 (137.03)	-0.015 (-0.38)	0.109 (2.77)
6.0	6.625 (168.28)	0.050 (1.27)	0.024 (0.61)	0.625 (15.88)	0.344 (8.74)	6.455 (163.96)	-0.015 (-0.38)	0.109 (2.77)
8.0	8.625 (219.08)	0.050 (1.27)	0.024 (0.61)	0.750 (19.05)	0.469 (11.91)	8.441 (214.40)	-0.020 (-0.51)	0.109 (2.77)
10.0	10.750 (273.05)	0.050 (1.27)	0.025 (0.64)	0.750 (19.05)	0.469 (11.91)	10.562 (268.27)	-0.025 (-0.64)	0.134 (3.40)
12.0	12.750 (323.85)	0.050 (1.27)	0.025 (0.64)	0.750 (19.05)	0.469 (11.91)	12.531 (318.29)	-0.025 (-0.64)	0.156 (3.96)
14.0	14.00 (355.60)	0.060 (1.52)	0.025 (0.64)	0.938 (23.83)	0.469 (11.91)	13.781 (350.04)	-0.025 (-0.64)	0.156 (3.96)
16.0	16.00 (406.40)	0.060 (1.52)	0.025 (0.64)	0.938 (23.83)	0.469 (11.91)	15.781 (400.84)	-0.025 (-0.64)	0.165 (4.19)

ENGINEERED COMPOSITE

APPLICATIONS

Permeate side of SWRO & BWRO.
Feed, Backwash & Permeate side of MF & UF systems.
Low pressure sides of energy recovery systems.

Housings

Glass fiber reinforced thermoplastic: completely resistant to corrosion.

Gaskets

EPDM rubber, suitable for hot and cold water services. Two shapes of gaskets available: C-shaped or Flush-fit. NSF/ANSI 61 approved for drinking water system components. *Not suitable for petroleum services.*

Bolts

Round-head square-neck 316 stainless steel bolts conform to ASME B18.5.

Nuts / Washers

316 stainless steel heavy hex nuts. Style D 0.75" to 3.0" supplied with silicon bronze nuts (type 651).

316 stainless steel heavy pattern.

STYLE P SPECIFICATIONS					
Nominal Sizes	Dimensions			Approx. Weight	Working pressure
	X	Y	Z		
Inches	inches (mm)	inches (mm)	inches (mm)	lbs. (kg)	PSI (bar)
0.75	2.24 (56.9)	3.39 (86.1)	1.75 (44.5)	0.41 (0.19)	250 (17)
1.0	2.58 (65.6)	3.81 (96.6)	1.83 (46.4)	0.49 (0.22)	250 (17)
1.25	2.84 (72.4)	4.11 (104.5)	1.82 (46.3)	0.52 (0.23)	250 (17)
1.5	3.16 (80.4)	4.42 (112.1)	1.88 (47.6)	0.58 (0.26)	250 (17)
2.0	3.86 (97.8)	5.21 (132.4)	1.98 (50.3)	0.73 (0.33)	250 (17)
2.5	4.36 (111.0)	5.90 (150.0)	2.02 (51.2)	0.90 (0.41)	250 (17)
3.0	5.04 (127.8)	6.64 (168.6)	2.03 (51.5)	1.10 (0.50)	225 (16)
4.0	6.42 (162.8)	8.38 (212.9)	2.24 (56.8)	1.77 (0.80)	225 (16)
6.0	9.02 (229.2)	10.56 (268.3)	2.36 (59.9)	2.90 (1.32)	100 (7)
8.0	11.04 (280.4)	12.98 (329.6)	2.76 (70.1)	4.37 (1.98)	100 (7)

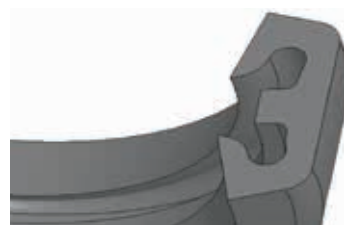


STYLE P

GASKET TYPES



C-SHAPED



FLUSH-FIT

OUR COMMITMENT

To provide our customers with exceptional support and consistently offer high quality products specific to project requirements. Our large stocking warehouse and our network of worldwide distributors allow us to quickly meet customer demands, whatever & wherever they may be.

COMPLEMENTARY PRODUCTS



END CAPS - TYPE N

END CAP TYPE-N (Standard End Cap)		
Pressure	Sizes	Material
400 to 1200 psi	0.75" and 12.0"	316SS, Duplex or Super Duplex



END CAPS - TYPE F

END CAP TYPE-F (Solid End Cap used to pierce and thread)		
Pressure	Sizes	Material
600 to 1200 psi	0.75" and 12.0"	316SS, Duplex or Super Duplex



PIPE SPOOLS

GROOVED PIPE SPOOLS		
Pressure	Sizes	Material
600 to 1200 psi	0.75" to 4.0" Various lengths	316SS, Duplex or Super Duplex



ELBOWS - 316SS

ELBOWS		
Pressure	Sizes	Material
600 to 1200 psi	45° - 1.0 to 4.0" 90° - 1.0 to 4.0"	316SS, Duplex or Super Duplex



FLANGE ADAPTOR

FLANGE ADAPTOR (Flange to Groove connection)		
Pressure	Sizes	Material
275 to 680 psi	2.0" and 3.0"	316SS, Duplex or Super Duplex



PERMEATE CONNECTORS

PERMEATE CONNECTORS		
Description	Sizes	Material
Flexible Hose*	Various sizes	Composite
Rigid J-Bend*	Various sizes	PVC
Rigid Elbow*	Various sizes	HPDE / Composite / PP

*All available with permeate sample valve

SUPPORT QUALITY CARE

Preferred supplier of stainless steel flexible couplings with the most references of large desalination plant installations in over 50 countries

"Piedmont provided outstanding technical support to our project. Their engineering team is not only an expert of the Piedmont products but they have experienced knowledge of the overall desalination process and piping design. I would recommend them for any large desalination plant."

- Damjoo R., Senior Project Manager, Korean EPC company



FIG. A

"The product quality of Piedmont Cartridge Filter Housings and Flexible Couplings helps us keep high reputation towards our customers. Piedmont's support during the design, execution and operation phases is outstanding; it reduces the project risks regarding these components."

- Diego P., Owner, Water treatment OEM



FIG. B

"Our company is using Piedmont for our large desalination projects. They are flexible commercially and competitive. We wouldn't hesitate to use them again"

- Team Leader Purchasing Dept., Desalination EPC company

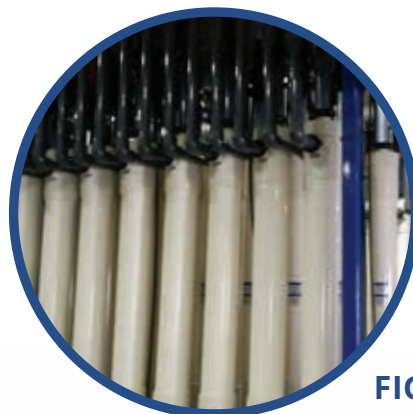


FIG. C

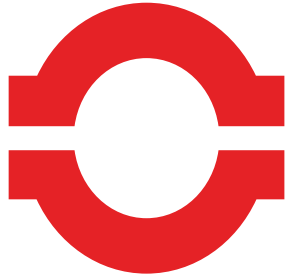
A - Low pressure sides of energy recovery systems | B - Concentrate side of BWRO systems |

C - UF Permeate & Backwash side of UF systems |

REFERENCE LIST

PARTIAL PROJECT LIST

PROJECT	CUSTOMER	PLANT CAPACITY (m ³ /day)	YEAR	
Sorek	IDE Technologies	624 000	2012	
Fujairah	Acciona	455 000	2014	
Umm Al Houl	Acciona	284 000	2016	Fujairah, UAE
Barka	Suez	281 000	2016	
Orange County	H2O Innovation	265 000	2012	
Sydney	Veolia	250 000	2009	Orange County, CA
Mirfa	Suez	240 000	2015	
Torre Vieja	Acciona	240 000	2009	
Escondida Water Supply	Doosan	220 000	2015	Mirfa, Abu Dhabi
Sant Joan Despi	Cadagua	206 000	2009	
Carlsbad	IDE Technologies	204 000	2013	
Basra	Sidem/Veolia	200 000	2016	Escondida, Chile
Qurayyat	Hyflux	200 000	2015	
Tianjin SDIC	IDE Technologies	200 000	2013	
Barcelona	Suez	200 000	2008	Carlsbad, CA
Aguilas-Guadalestín	Cadagua - Sacyr	200 000	2011	
Reliance, Jagm Nagar	IDE Technologies	168 000	2015	
Ras Abu Fontas	Acciona	164 000	2015	Perth, Australia
Sadara	Sidem/Veolia	150 000	2014	
SSDP, phase 2	Tecnicas R. / Valoriza	140 000	2012	
SSDP, phase 1	Tecnicas R. / Valoriza	140 000	2010	
Valdelentisco	Cadagua	140 000	2006	
Tuas III	Tedagua	136 000	2016	
Sunbo Unitech Gu-Pyeong	VWS Westgarth	127 000	2011	
Gold Coast Desalination	Veolia	125 000	2009	
Dubai Sea water	Xylem (ITT)	113 000	2005	
Putatan WTP	Acciona	100 000	2017	
Tampa Bay	American Water Acciona	95 000	2016	
Antofagasta	Aguas Antofagasta	85 000	2015	
Cartagena	Desalia SL	64 000	2016	
Barka	Osmoflo	47 000	2015	
Candelaria Minera	Aqualia	45 000	2011	
Santa Barbara	IDE Technologies	33 000	2016	
Moncòfa	GS Inima	30 000	2011	
West Hub (P76)	VWS Westgarth	16 000	2012	
Tenerife	Aqualia	10 000	2010	



**CORROSION RESISTANT EQUIPMENT
FOR WATER TREATMENT &
DESALINATION APPLICATIONS**

Piedmont

WAREHOUSE:

1048, La Mirada Court
Vista, CA 92081, United States of America
760.305.7616 | orders@piedmontpacific.com

OTHER PIEDMONT PRODUCTS

FRP CARTRIDGE FILTER HOUSINGS
CARTRIDGE FILTER ELEMENTS
FRP BAG FILTER HOUSINGS
FRP STRAINERS
FIBERMOVE™

piedmontpacific.com